



MWS TOP PRODUCTS OF 2024



AA Products Inc

X39-LC FULL TRUCK RACK

Introducing the X39-LC full truck rack by Affordable Aftermarket Products (AA Products Inc.) Designed as a competitive alternative to a fully welded rack, the X39-LC is the premier choice for fleet managers looking for a strong, durable truck rack at a great price. Its modular, high strength steel design boasts a tested load capacity of 1,000 pounds and is perfect for transporting lumber, ladders, pallets, and other heavy-duty materials. One of the key advantages it has over a fully welded unit is customizability. It's fully adjustable and will fit onto almost any truck. Additionally, modularity provides customization options for things such as short or long over-the-cab extensions or removable cross bars for easy access to the truck bed (say when loading a pallet via forklift), guaranteeing that the rack will fit any contractor's needs.

ISO 9001 certification of AA Products manufacturing process guarantees consistent quality of the X39-LC, as well as their other equipment. Materials are subjected to batteries of tolerance and environmental tests to ensure the rack is corrosion resistant and built to withstand the



toughest loads in rugged conditions. Whether you're a contractor, fleet manager, or do-it-yourselfer, the X39-LC is to be the perfect blend of quality and affordability. It's the best example of the AA Products Inc. guarantee:

"Where great craftsmanship meets great price!"



www.aaproductsinc.com

American Van

SHELVING AND BIN STORAGE SYSTEMS

Turning commercial vans into efficient mobile workplaces is American Van's specialty, and their high-performance Cargo Van Shelving Systems do so seamlessly for a wide range of van models like Ford Transit, Mercedes-Benz Sprinter, and RAM ProMaster.

These pre-assembled shelving units are made from heavy duty powder-coated steel and bright aluminum, enhancing storage capacity while maintaining a clean, professional look. The focus on efficiency extends all the way to installation, as these systems arrive ready to install, ensuring a hassle-free experience from start to finish. It's evident by the five-star reviews: thousands of successful businesses depend on these essential American Van solutions to carry heavy-duty tools and equipment in their day-to-day operations.

To maximize storage capacity, these shelving units are often combined with bin storage systems for the ultimate organizational package and cater to all commercial vans, regardless of roof height.

Manufacturing and selling their products directly to customers ensures close quality control, as does their

top-notch customer service. With almost 50 years' worth of experience in the van

and truck equipment industry, few competitors offer the product selection, upfit capability, and quality assurance that American Van does.

Start maximizing your van storage capacity and enhancing organizational capabilities by visiting the American Van.



www.americanvan.com

Auto Crane

TITAN 85 CRANE BODY

In response to market demand, Auto Crane has added an 11-foot Titan 85 crane body to its product line. Designed for class 6 and class 7 trucks, the new 11-foot crane body can be equipped with Auto Crane's HC-12 or HC-14 crane for reliable lifting capacity on the job site. The integral crane box transfers load directly to the outriggers, reducing stress on the chassis. Auto Crane's dual extension outrigger system means better stability ratings in all zones, keeping service technicians safer on the job site. Reducing fuel and maintenance costs is a priority for all fleet managers, and Auto Crane's patented Power on Demand system helps them do just that with the Titan 85. Fleet managers can monitor and manage engine and chassis usage, lowering both acquisition and operating costs. The new Titan 85 11-foot body, like all Titan crane bodies, is available with Titan Armor, a protective paint shield with an industry leading 15-year rust through warranty. Titan Armor safeguards your investment from dealer lot to auction block.

Auto Crane has been manufacturing service cranes and work truck bodies for 65 years. Designed for safety, reliability,



and productivity, we continually listen to our customers to develop the equipment they need to be successful. Elevate your work with Auto Crane. ●



A Ramsey Industries Brand

www.autocrane.com

BOSS Industries

PTO DRIVEN 900 CFM TWIN ROTARY SCREW AIR COMPRESSOR UNDERDECK SYSTEM

The BOSSAIR 900 is the most unique rotary screw air compressor package on the market today. When the job demands the most out of the vehicle, the BOSSAIR 900 is the only choice for the largest jobs. Utilizing two rotary screw air compressors, driven off two separate PTOs to produce the maximum mobile air compressor performance available on a single Class 8 type platform.

The BOSSAIR 900 offers a low speed and high-speed option. At a low, quiet 1,500 RPM, the system produces 750 CFM! Switch to high speed at 1,800 RPM and the system produces 900 CFM!

Once the PTOs are engaged, engine torque and horsepower are transmitted to the air compressor via a properly sized tubular drive shaft. The speed control for the compressor modulates according to air demand, which offers fuel savings, as well as reduces wear and tear on the vehicle's engine. When the job is complete, simply disengage the PTOs and continue to the next job site.



Because the PTO air compressor components become an integral part of the vehicle and are mounted below the bed, it offers many advantages you cannot get when using conventional air compressors.

- Frees up the tow hitch.
- Minimizes bed space - BOSSAIR PTO air compressors are mounted under deck.
- Fewer parts - Compared to its towable or cross-mount counterparts.
- Light weight - Only 3,100 pounds for both systems.
- Only one engine to maintain - Simplifies preventive maintenance. ●



www.bossair.com

Hannay Reels

N700 SERIES SPRING-REWIND REELS

Keeping hoses and cables organized on work trucks saves valuable time, improves safety, and extends working life. Hannay Reels offers a wide range of standard models and configurations, along with reels that can be customized for specific needs and space constraints. These include complete reel packages that match hoses and cables with the appropriate reel for a wide range of industries and applications, including water, air, lubrication, fueling, electric, communications and DEF.

One of the most versatile reels for work trucks is the N700 Series spring-rewind reel, helping crews maximize space with a narrow frame and a compact mounting base ideal for everyday use in limited-space work environments.

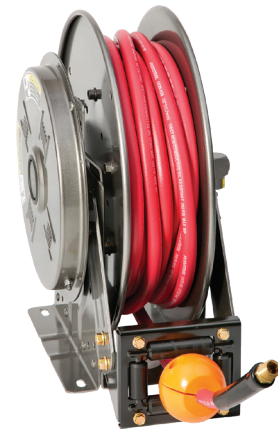
It is available in painted steel with a stainless-steel option for corrosive environments. It also features maintenance-free dual-ball bearings, and its components are easily accessible for quick routine upkeep.

Specially engineered to streamline pneumatic needs, lubrication, washdown, water transfer, and general industrial applications, the N700 Series hose reel can easily attach to

trucks and overhead cranes thanks to a wide range of roller positions providing multiple mounting options.

The N700's spring rewind functionality simplifies pickup and storage, and it features a declutching arbor to prevent damage from reverse winding. A non-sparking ratchet assembly unit makes it safer to operate in hazardous environments. The N700 handles 1/4-inch through 1/2-inch I.D. hose and hose pressures up to 10,000 psi.

For peace of mind, every reel is backed by a three-year limited warranty when properly installed, operated and maintained. ●



 **Hannay Reels®**
The reel leader.
www.hannay.com

High Bar Brands

MINIMIZER FLOOR MAT

Keeping the interior of any truck clean is an arduous and sometimes impossible task. Off-road and abusive environments can wreak havoc on cab floors, costing companies money when it comes time to sell their own trucks or return leased trucks.

Nobody wants damage to the interior of the cab, yet in-cab corrosion is one of the costliest issues facing companies that run garbage haulers, cement mixers, or bucket trucks – just to name a few applications – because drivers constantly enter and exit the cab due to the very nature of the work.

Since harmful elements enter the cab unavoidably, and spills originating on the inside do happen, prevention and cleaning are key.

One solution that helps accomplish both is Minimizer's line of custom molded, tray-style floor mats.

The raised edge prevents damaging chemicals, accidental spills, and the usual dirt and grime from escaping the mats, which are easily removed to shorten the cleaning process. Clean the mats with a simple hose or pressure washer and



leave them to dry. Shortly after, the mats can be reinserted to make the cab floor look new again.

Keep your trucks clean and nice with this no-brainer accessory, which adds real value to the truck. It improves resale value and creates cleaner/safer working conditions throughout the truck's life.

Minimizer offers more than 100 floor mat kits for class 5, 6, 7, and 8 trucks. You can easily find your model by visiting minimizer.com and using their Floor Mat Selector Tool to find individual part numbers and see local and online buying options. ●

 **Minimizer®**

www.minimizer.com



Isuzu Commercial Trucks

NQR CREW CAB CLASS 5: GAS TRUCK

The 2025 Isuzu NQR gas crew cab is no doubt a “top product.” This truck is built to haul your crew, and payload with the convenience of a gas engine that has a 200,000-mile design life. The engine produces 350 horsepower and 425 pound/feet of torque and is mated to a six-speed Allison 1000-RDS series transmission that transfers the power seamlessly to the wheels for smooth and responsive acceleration when under load.

The NQR crew cab can seat up to seven passengers and is available in two wheelbases (150-in. and 176-in) to accommodate bodies from 12-to-16-ft in length. With a GVWR of 17,950-lbs, it addresses a lot of state and municipal weight restrictions for Class 5 trucks (check your local laws for details) while providing a body payload from 11,407-to 11,471-lbs. That is a lot of heft from a truck this size.

As with all Isuzu trucks, its low-cab-forward design provides superior driver-and-passenger comfort, easy-to-drive maneuverability, and excellent visibility that helps reduce driver fatigue and enhance safety. When it comes to warranty, it is backed by a three-year basic warranty, a

five-year/75,000-mile engine, and five-year/unlimited mile transmission warranty.

What makes this truck even more appealing is the service and support - Isuzu has an extensive nationwide network of dealers to support your investment in them. Isuzu trucks’ blend of reliability, efficiency, versatility, and cost-effectiveness, making them a trusted choice for businesses seeking dependable transportation solutions. ●

ISUZU

www.isuzuov.com

Optronics

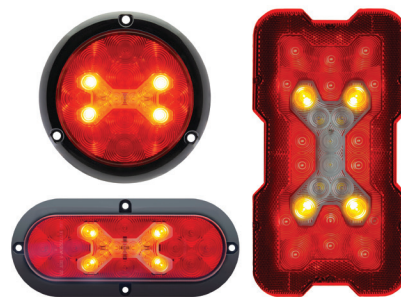
FUSIONX LED COMBINATION LAMPS

Optronics’ new FusionX LED combination stop, tail, turn, backup and warning lights are the first of their kind to enable their brake function to override their warning function while in use. Featuring a signature “X” LED lighting array in their centers, and available in eight SKUs, the FusionX lamps are the newest members of Optronics’ popular Fusion Series combination lamps.

Before the introduction of Optronics’ Fusion Series LED combination lamps in 2014, vehicles used separate six-inch oval or four-inch round stop, tail, turn lamps and backup lamps. Each lamp needed its own mounting hole, and these holes were made in the vehicle body panels, frame posts, docking plates or gussets. Optronics Fusion lamps changed the equation by consolidating multiple lighting functions into a single lamp footprint, reducing complexity and cost, while maintaining structural integrity. The addition of a compliant warning light function in the FusionX was a logical next step in the evolution of the Fusion Series.

Until now, combination lamps with warning light features have not met FMVSS 108 standards because their flashing

warning lights continue to operate even when their brake lights illuminate. Optronics’ FusionX LED lamps solve this problem by disabling the warning light function as soon as the brake light is illuminated. The warning override feature helps eliminate potential misinterpretations by others on the road or worksite and allows FusionX to fully meet FMVSS 108 requirements. The lamps also meet the SAE J595 standard for Class 2 and Class 3 directional warning lamps. ●



FUSIONX

Optronics

www.optronicsinc.com

PowerStop

Z36 AND Z47 BRAKE PAD AND ROTOR SOLUTIONS

As the fastest-growing brake brand in the aftermarket, PowerStop is proud to introduce premium brake solutions for Class 4 through 7 medium-duty trucks delivering reduced cost-per-mile. For last mile and normal duty MD Fleets, PowerStop offers Z36 Truck and Tow Brake Pads. Its low-dust ceramic formula is infused with carbon-fiber to strengthen the compound and provide severe-duty stopping power. This superior fade-free stopping power is critical for Class 4 and 5 vehicles making frequent stops.

For fleet vehicles running full GVW daily, Z47 Medium Duty and Fleet Brake Pads are the optimal solution. The carbon-fiber semi-metallic formula provides long-lasting durability and helps maximize vehicle uptime. The pads also feature stainless-steel shims for noise abatement. Combine both brake pad options with PowerStop rotors to maximize overall brake system performance and reduced cost-per-mile.

PowerStop Fleet Solutions product offerings are available for most Class 4 through Class 7 MD hydraulic brake system applications on the road today, including Chevrolet, Ford,



Freightliner, GMC, Hino, International, Isuzu, and RAM including Type C School Bus applications. ●

POWERSTOP®

BRAKE UPGRADES MADE EASY

www.powerstop.com/fleet

Sterling Fleet Outfitters Inc

FULL-SIZE TRUCK CAPSULE SERVICE MECHANIC PACKAGE

Sterling's Full-Size Truck Capsule Service Mechanic package streamlines workflow and maximizes efficiency. Designed specifically for service mechanics, this upfit package includes shelving and storage for tools and equipment, a full-length workstation, task and safety lighting, a compressor air system, and an inverter power system.

Packd shelving is featured in this package which is crafted from high-quality aluminum and composite materials. This lightweight yet durable construction reduces noise while in motion and preserves the lifespan of the vehicle upfit. The space is meticulously planned to maximize the working area for the technician. For instance, the air compressor is placed in the nose cone of the cap, which has a 500 pounds capacity, keeping it out of the technician's way. A folding hitch step and grab handles facilitate easy ingress and egress, while the addition of a Flettner vent manages airflow, all contributing to technician safety and comfort.

The equipment is housed in state-of-the-art fiberglass slip-in truck capsules, molded from a single piece, and completely sealed to protect against the elements and

condensation. Designed for an eight-foot truck bed, the capsule offers interior heights of 6'1" and 6'3", ensuring operator comfort. Its standout feature is its transferability between trucks; it can be effortlessly moved by lifting from the inside roof, making it the most durable and versatile fiberglass capsule on the market, ideal for fleet managers and technicians operating leased vehicles.

Sterling's Full-Size Truck Capsule Service Mechanic package is the ultimate solution for service mechanics seeking to enhance their productivity and efficiency on the go. ●



STERLING

Get More Done.

www.sterlingfleetoutfitters.com

Trim-Lok

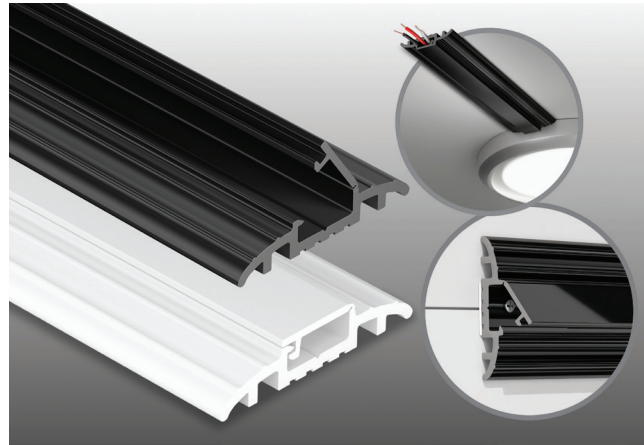
SCREW CAP COVER

Introducing the innovative Screw Cap Cover, revolutionizing traditional aluminum rail and vinyl cap systems with its lightweight, all-plastic, one-piece design. Say goodbye to bulky aluminum and separate vinyl inserts - our product integrates functionality and efficiency seamlessly.

Crafted for ease of installation, the Screw Cap Cover features an integrated cap with a flexible hinge. This unique design allows effortless opening and closing ensuring secure fastening once screwed into place. Once secured in place, the cap snaps shut, ensuring a secure fit that maintains a clean and professional appearance.

Available in a variety of shapes and sizes, our Screw Cap Cover adapts to diverse applications across industries. Beyond its primary use, it doubles as a wire conduit, ideal for neatly running wires inside along truck or van ceilings, or outside along the vehicle body. This capability eliminates the hassle of dealing with unsightly hanging wires, enhancing both safety and aesthetics.

For those seeking a polished finish, custom molded end caps are also offered, enhancing the overall look



and functionality of installations. Each Screw Cap Cover is engineered to meet high standards of durability and practicality, ensuring longevity and reliability in any setting.

Learn more about Trim-Lok Screw Cap Cover - where innovation meets simplicity, delivering efficiency without compromise. ●

TRIM-LOK INC.

www.trimlok.com

Voyager

VOYAGER AIO

There are two types of people: trendsetters and those waiting for the craze to reveal the new product's value. Initially, new technology was not readily greeted with open arms in the commercial fleet industry. However, manufacturers and fleet owners eventually recognized that adopting safety technology would drastically improve the preservation of fleet life, cargo life, and, most importantly, human life.

Truckers are among the most deserving of the safest seats for their journey. Any safety system engineer can tell you that their mission is to give drivers the best chance of arriving at their destination without so much as a scratch. Facing the unpredictable realm of the open road more than most, truckers and their vehicles benefit from advanced protection. Voyager exemplifies this belief, initiating the genesis of a safer trucking universe with its innovative AIO system.

AIO offers a comprehensive and customizable selection of safety systems for commercial vehicles, such as a 360° camera view, vehicle condition alerts, TPMS, proximity sensors, and more. It is scalable and easily integrated with



existing commercial vehicle systems that utilize CAN-Bus communication. Revamping commercial vehicle safety might be a slow process. But it's another reason that AIO's engineers and product development team are prepared to walk fleet owners through every step. As the industry continues to evolve, AIO remains committed to advancing safety standards and ensuring every driver reaches their destination safely and securely. ●

Voyager

www.asaelectronics.com

KAMMOK

CROSSWING AWNINGS

Deployed lightning-fast in just three seconds, the Crosswing is a complete evolution in car awning shelters. With a quick pull, you can have immediate shade from the sun and protection from rain. It's also able to withstand 30 miles per hour winds and has three deployment width settings. Great for work trucks and vans, providing contractors with protection from the sun and rain. To learn more about Crosswing awnings as well as their complete product line, visit their website at www.kammok.com.



NEXIQ

ETECHNICIAN DIAGNOSTIC SOFTWARE

NEXIQ Technologies eTechnician now includes Mitchell 1's Repair-Connect diagnostic information. Now, eTechnician users gain access to Repair-Connect's engine fault code testing and repair procedures for all makes of class 4-8 commercial trucks. Repair-Connect provides fault code diagnostics, wiring diagrams, specifications, component locations, connector views, test steps and removal and installation procedures. With a eTechnician subscription, technicians can access information available from the vehicle through eTechnician, including diagnostic trouble codes, input data from sensors and output data for components including fuel injectors and NOx Sensors. Technicians can then rely on Repair-Connect to provide information about the vehicle, including component locations using high quality photos, connector details and specific component tests. To learn more, visit www.nexiq.com.

DANNAR

MOBILE POWER STATION

Part energy storage, part modular workhorse, the new platform option offers high power handling, bidirectional flow, enhanced efficiency and scalability ideal for large-scale industrial applications and integration into renewable energy sources like solar and wind. The Mobile Power Station is a versatile, modular off-road platform capable of powering a variety of work attachments, providing mobile microgrid energy, and supporting autonomous operations. It also functions as an unparalleled energy storage solution. For more information, visit www.dannar.us.com.



FUELPRO TRAILERS

MULTI-TANK FUEL TRAILERS

FuelPro Trailers multi-tank line allows users to legally transport diesel fuel without a HazMat endorsement. Available in 475-gallon, 700-gallon, and 950-gallon models in skid-mounted or DOT-complaint trailer-mounted configurations. Customizable with additional compartments for DEF, grease, hydraulic fluid, engine oil, reclaim oil, water, anti-freeze, and gear oil, and components such as a custom six-drawer toolbox, ARC N AIR compressor/generator with welder and battery charger, or tool/parts storage compartment. Safety and durability are designed into each model, as heavy-duty safety chains and hooks, diamond plate rock guard fenders, reflective DOT tape, roll over railing, and a 7,000-pound commercial jack are standard equipment. Coated with PPG Delfleet Essential polyurethane epoxy primer for protection against the elements. An adjustable five position vertical 2 and 5/16-inch ball hitch or pintle hitch for versatility in transport. www.fuelprotrailers.com